



MONTHLY MEMBERSHIP PROGRESS REPORT

District 132

Results as of: 4/30/2017

GMT: MIKLOS HORVATH

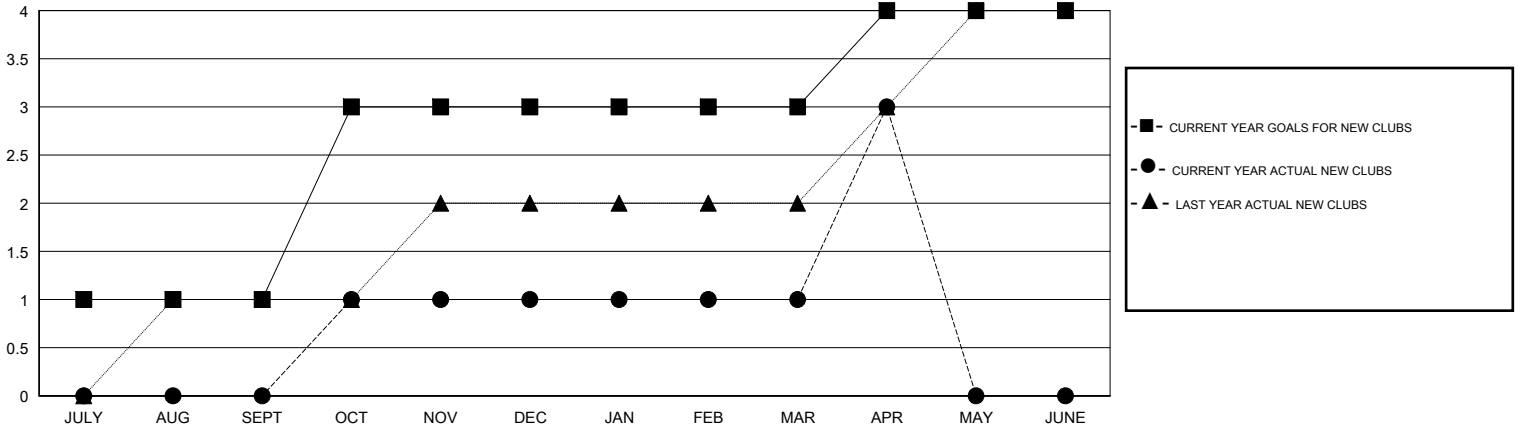
LOCATION MACEDONIA (FYROM)

GMT CA

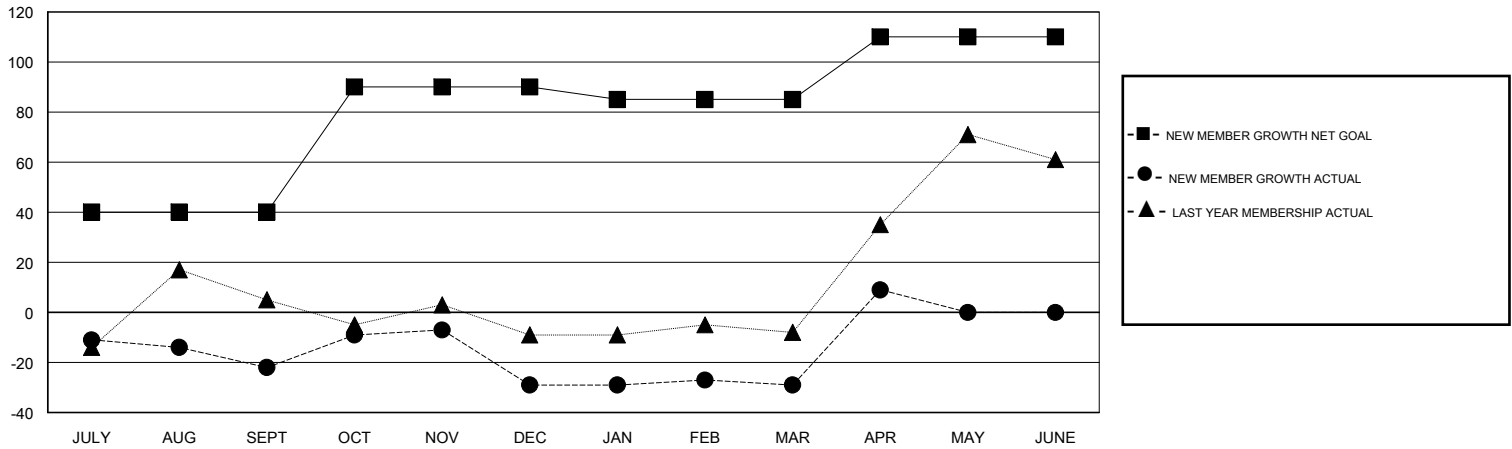
| Clubs | | | |
|-----------------------|---------------|-----------|---------------|
| RESULTS FOR 2016-2017 | | | |
| QUARTER | NEW CLUB GOAL | NEW CLUBS | DROPPED CLUBS |
| JULY/AUG/SEPT | 1 | 0 | 0 |
| OCT/NOV/DEC | 2 | 1 | 1 |
| JAN/FEB/MAR | 0 | 0 | 0 |
| APR/MAY/JUNE | 1 | 2 | 0 |

| Members | | | |
|-----------------------|--|--|--|
| RESULTS FOR 2016-2017 | | | |
| QUARTER | NEW MEMBER GROWTH NET GOAL (not reinstated or transfers) | NEW MEMBER GROWTH ACTUAL (not reinstated or transfers) | DROPPED MEMBERS ACTUAL (including transfers) |
| JULY/AUG/SEPT | 40 | 3 | 25 |
| OCT/NOV/DEC | 50 | 47 | 54 |
| JAN/FEB/MAR | -5 | 30 | 30 |
| APR/MAY/JUNE | 25 | 53 | 15 |

GOALS AND ACTUAL NEW CLUBS CUMULATIVE



GOALS AND ACTUAL MEMBERS CUMULATIVE



| | | |
|------------------------|---|------------------------------------|
| DROPPED CLUBS: 1 | 24 CLUBS OF 40 ADDED 1 OR MORE NEW MEMBERS | GENDER DISTRIBUTION |
| | | MALE 481 (56.99%) |
| | | FEMALE 363 (43.01%) |
| DROPPED MEMBERS | CLICK HERE FOR CUMULATIVE MEMBERSHIP DATA | TOTAL FAMILY UNIT MEMBERS 98 |
| DECEASED 0 | | FAMILY MEMBERS PAYING HALF DUES 50 |
| CLUB CANCELLED 5 | | |
| OTHER 119 | | |
| TOTAL 124 | | |